

YEAR 2008

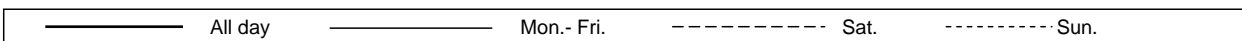
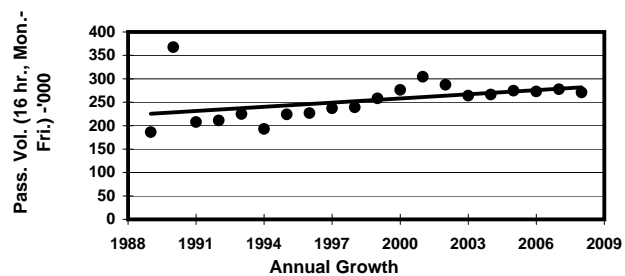
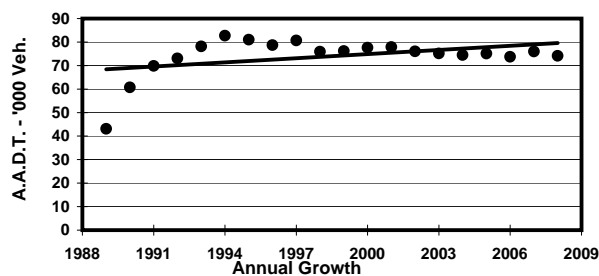
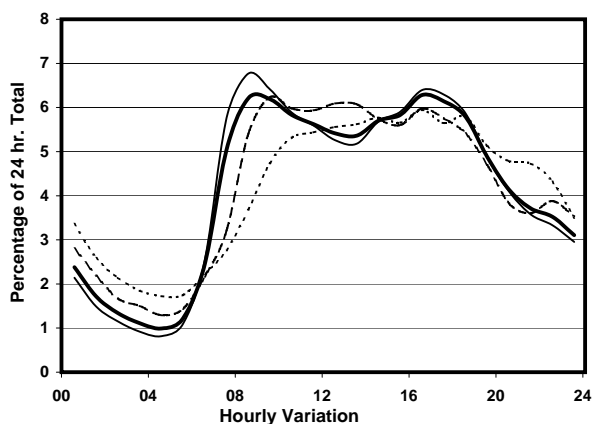
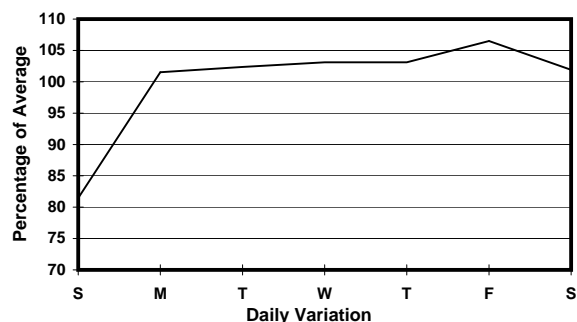
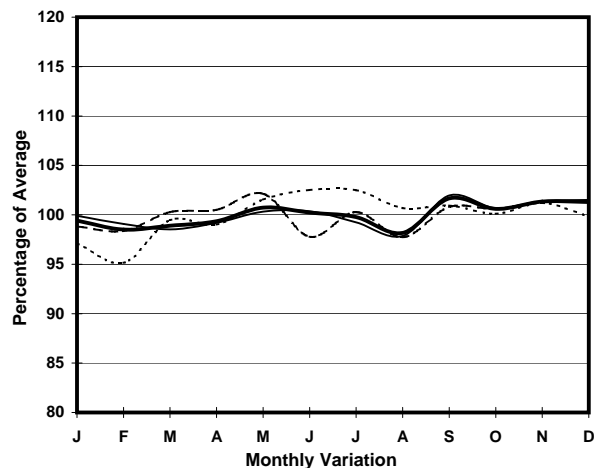
Location

Screenline I-I(Boundary between Shau Kei Wan & Chai Wan)

Stations on Cordon/Screenline

1009 and 2215

1. TRAFFIC FLOW VARIATION AND GROWTH



2. TRAFFIC CHARACTERISTICS (BY DIRECTION)

Parameter

SOUTH BOUND

Parameter	All - Day	Mon. - Fri.	Sat.	Sun.
A.A.D.T.	37040	38590	38070	30860
R 12 / 24 - %	67.5	69.1	65.5	59.5
R 16 / 24 - %	85.1	86.4	82.7	79.8
AM Peak Hour	0900-1000	0900-1000	0900-1000	0900-1000
One-way flow at AM peak hour	2340	2590	2240	1330
T - % (AM)	-	14.6	-	-
PM Peak Hour	1600-1700	1600-1700	1600-1700	1600-1700
One-way flow at PM peak hour	2330	2470	2280	1840
T - % (PM)	-	15.3	-	-
Prop.of commercial vehicles - 16 hr.	-	13.1	-	-

NORTH BOUND

Parameter	All - Day	Mon. - Fri.	Sat.	Sun.
A.A.D.T.	37110	38790	38310	30090
R 12 / 24 - %	71.4	72.9	69.3	64.5
R 16 / 24 - %	86.3	87.4	84.1	81.9
AM Peak Hour	0800-0900	0800-0900	0900-1000	0900-1000
One-way flow at AM peak hour	2460	2820	2520	1560
T - % (AM)	-	11.3	-	-
PM Peak Hour	1700-1800	1700-1800	1600-1700	1800-1900
One-way flow at PM peak hour	2390	2590	2280	1830
T - % (PM)	-	12.4	-	-
Prop.of commercial vehicles - 16 hr.	-	12.6	-	-

3. OTHER INFORMATION AND COMMENT

4. Vehicle classification and occupancy - Monday to Friday

Time		Class of vehicle									
		Motor	Private	Taxi	Private	PLB	Goods veh.		Non	Fr. Bus	
		Cycle	Car		LB		Light	M & H	Fr. Bus	SD	DD
0700-0800	Pro	5.7	21.6	27.9	2.5	4.7	19.2	4.5	6.5	0.2	7.2
	Ocp	1.1	1.5	2.0	9.3	12.3	1.4	1.6	22.5	5.7	52.7
0800-0900 Peak Hour	Pro	4.9	38.0	24.7	1.8	2.7	14.7	4.4	3.8	0.1	4.9
	Ocp	1.1	1.3	1.9	4.6	13.8	1.5	1.5	13.3	14.5	53.3
0900-1000	Pro	2.9	29.5	25.1	2.1	2.6	25.3	4.9	2.2	0.1	5.3
	Ocp	1.1	1.4	1.9	2.8	10.6	1.7	1.6	8.6	9.3	25.4
1000-1100	Pro	2.9	28.0	21.9	1.4	2.9	29.8	5.5	1.8	0.1	5.8
	Ocp	1.1	1.4	1.8	2.1	8.4	1.5	1.7	3.6	1.0	22.0
1100-1200	Pro	3.5	22.6	19.9	2.7	3.0	35.7	5.0	2.2	0.1	5.2
	Ocp	1.1	1.4	1.8	2.7	9.7	1.6	1.5	2.2	1.0	25.0
1200-1300	Pro	2.6	27.0	21.1	3.4	2.6	28.7	6.2	3.6	0.1	4.6
	Ocp	1.1	1.3	1.8	2.1	8.7	1.6	1.4	13.7	10.0	25.5
1300-1400	Pro	3.4	25.1	23.4	1.5	3.1	29.7	6.4	2.8	0.1	4.6
	Ocp	1.1	1.4	1.9	3.8	10.5	1.7	1.5	8.9	1.0	26.6
1400-1500	Pro	3.4	29.0	20.4	1.9	2.8	28.5	6.1	3.0	0.1	4.9
	Ocp	1.1	1.4	1.9	3.0	10.6	1.7	1.6	4.8	18.0	23.5
1500-1600	Pro	2.0	31.5	21.5	2.1	3.0	27.3	5.4	2.3	0.1	4.8
	Ocp	1.1	1.5	1.7	3.7	11.0	1.6	1.5	16.8	19.0	27.8
1600-1700	Pro	2.7	27.7	22.3	2.3	3.2	28.1	4.6	4.3	0.1	4.8
	Ocp	1.0	1.6	1.8	2.8	11.0	1.7	1.6	7.7	10.0	32.7
1700-1800	Pro	4.6	34.1	23.0	2.1	2.8	20.9	3.5	3.2	0.1	5.9
	Ocp	1.1	1.5	1.8	3.1	11.3	1.7	1.6	7.4	27.3	39.0
1800-1900	Pro	5.0	45.1	20.3	1.1	3.1	15.7	1.6	2.4	0.1	5.5
	Ocp	1.1	1.5	1.8	4.9	12.9	1.6	1.3	7.6	23.3	54.3
1900-2000	Pro	4.3	52.0	20.4	0.7	3.8	9.9	1.3	1.2	0.1	6.5
	Ocp	1.1	1.4	2.1	2.9	10.9	1.4	1.2	9.0	30.5	41.6
2000-2100	Pro	5.1	42.4	27.6	0.6	3.7	8.7	1.8	1.1	0.3	8.7
	Ocp	1.1	1.4	1.8	3.7	10.8	1.7	1.3	1.7	6.0	24.4
2100-2200	Pro	5.3	36.8	35.3	1.1	3.3	7.8	1.6	0.5	0.2	8.1
	Ocp	1.2	1.6	2.0	2.5	7.2	1.6	1.2	3.0	4.8	27.6
2200-2300	Pro	6.3	36.5	36.3	0.4	3.5	6.5	1.0	0.7	0.3	8.4
	Ocp	1.3	1.6	1.9	2.4	6.8	1.5	1.3	1.0	5.7	24.0
16 hours	Pro	3.9	32.5	23.8	1.8	3.1	22.0	4.2	2.8	0.1	5.8
	Ocp	1.1	1.5	1.9	3.6	10.7	1.6	1.5	10.8	10.0	33.7

Legend

- Pro.** Proportion of vehicles in % (Sum may not add up to 100% due to figure rounding)
- Ocp.** Average occupancy of vehicles
- M & H** Medium and Heavy